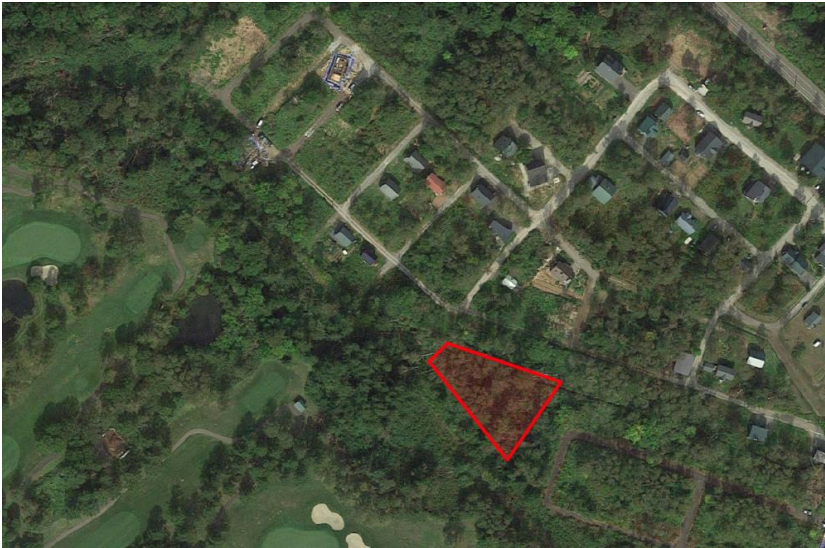


LARGE DEVELOPMENT LAND



Niseko Property

190-15 Aza Yamada
Kutchan-cho, Hokkaido Japan
T: +81 136 21 5060
E: sales@nisekoproperty.com

LARGE DEVELOPMENT LAND

Given St Moritz's very close proximity to Hirafu, the location is popular with both those building their own homes and developers with their sights on larger projects. This block is a large 2,920 m² (approx. 883.3 tsubo), making it one of the largest pieces of land available in the subdivision. It is well-suited to a small development of multiple villas or even a commercial property. The land enjoys excellent Mt Yotei views and a tranquil alpine feel- despite being walking distance to Hirafu. Seize the day and secure this opportunity now!



Property Summary

Address : 59-177, -178, -179 Aza-Kabayama, Kutchan-cho

Price : ¥265,200,000

Land size : 2,920m²

(approx 883.3 tsubo)

Price per Tsubo: ¥300,000

Time to lift : Driving - 5 min

Time to town : Driving - 18min

(to Kutchan Town)